

Guide to launching the portable version of the AreaTester app.

1. Package contents.

App files.

This package contains 12 application files specially compiled to run in different versions of **AutoCAD**. For more information about the compliance of the application files with the **AutoCAD** version, see the table below:

App file	File bitness	AutoCAD version
AreaTester19X64.arx	64 bit	AutoCAD 2013 AutoCAD 2014
AreaTester19X86.arx	32 bit	
AreaTester20X64.arx	64 bit	AutoCAD 2015 AutoCAD 2016
AreaTester20X86.arx	32 bit	
AreaTester21X64.arx	64 bit	AutoCAD 2017
AreaTester21X86.arx	32 bit	
AreaTester22X64.arx	64 bit	AutoCAD 2018
AreaTester22X86.arx	32 bit	
AreaTester23X64.arx	64 bit	AutoCAD 2019 AutoCAD 2020
AreaTester23X86.arx	32 bit	
AreaTester24X64.arx	64 bit	AutoCAD 2021 AutoCAD 2022 AutoCAD 2023 AutoCAD 2024
AreaTester25X64.arx	64 bit	AutoCAD 2025

Configuration file.

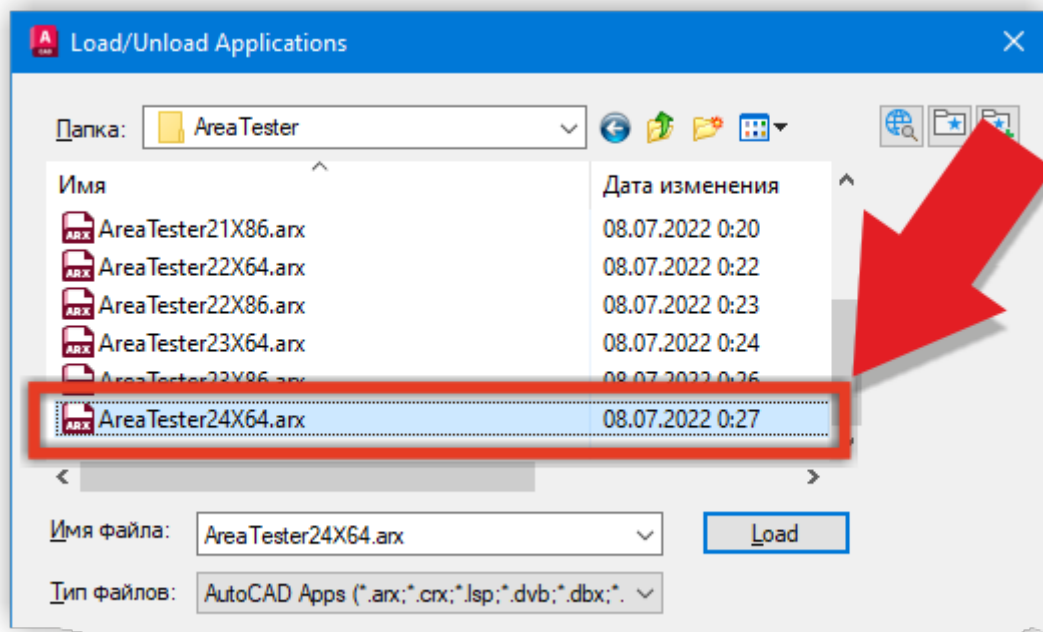
The **AreaTester.cfg** configuration file contains application configuration data. This file should always be placed in the same folder as the application files.

2. Installing the application.

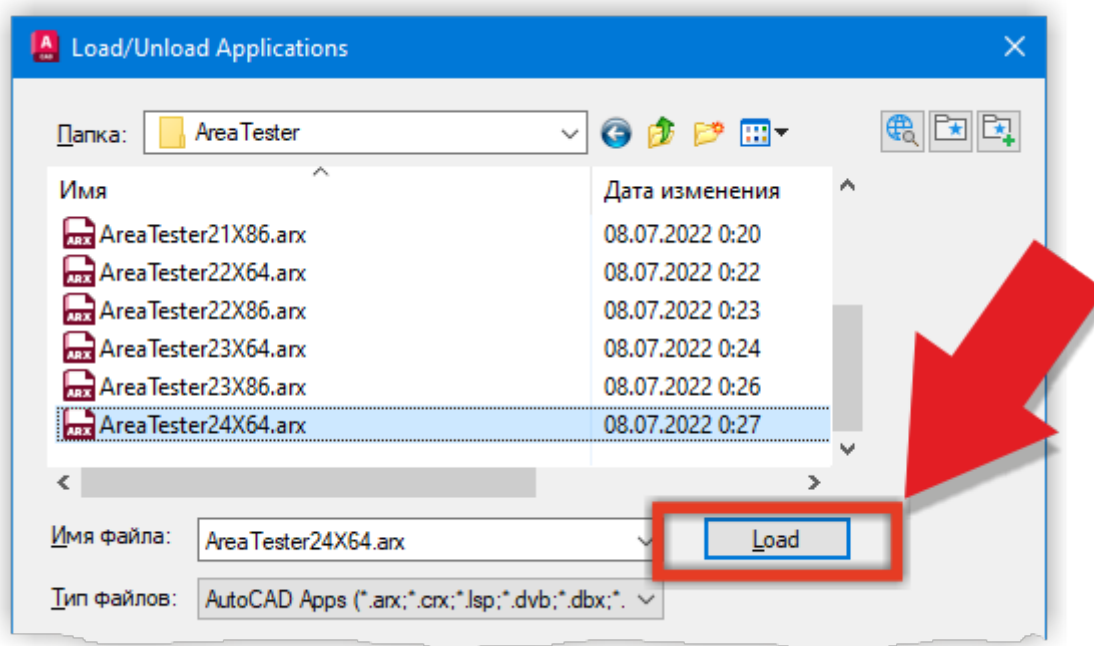
Unzip all the files in this package to any non-write-protected folder on your computer. No other steps are required to install the application files.

3. Loading the app.

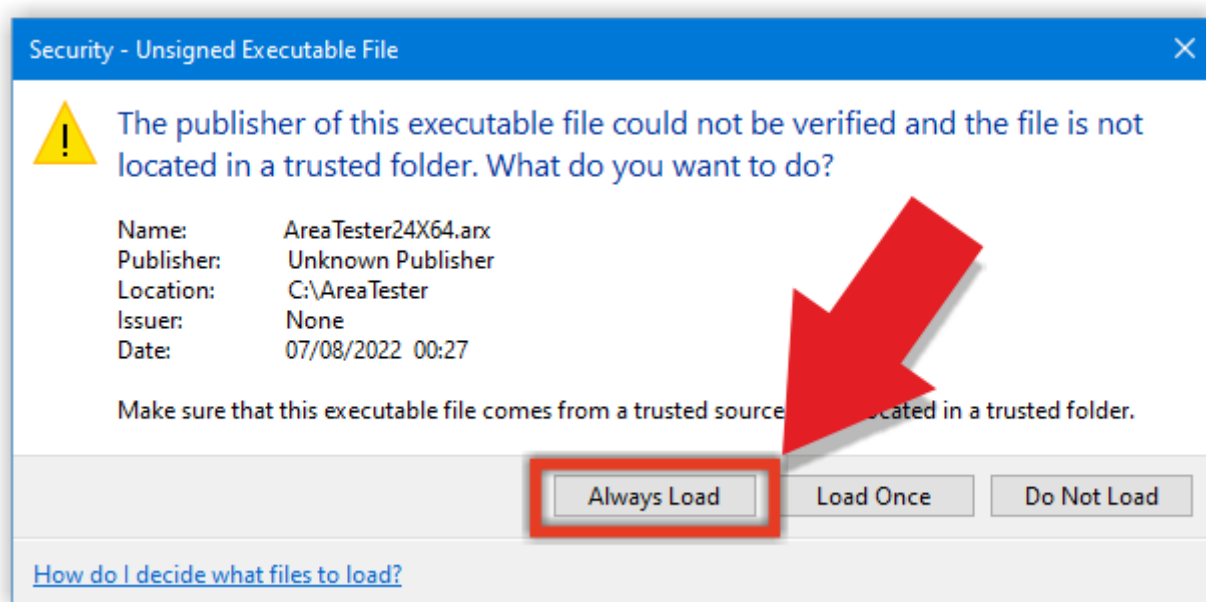
- Start **AutoCAD**.
- After **AutoCAD** starts, type **_APpload** at the command prompt.
- In the dialog box that appears, specify the full path to the application file from the unzipped package. The application file selected in this window must match the version of your **AutoCAD** (see table above).



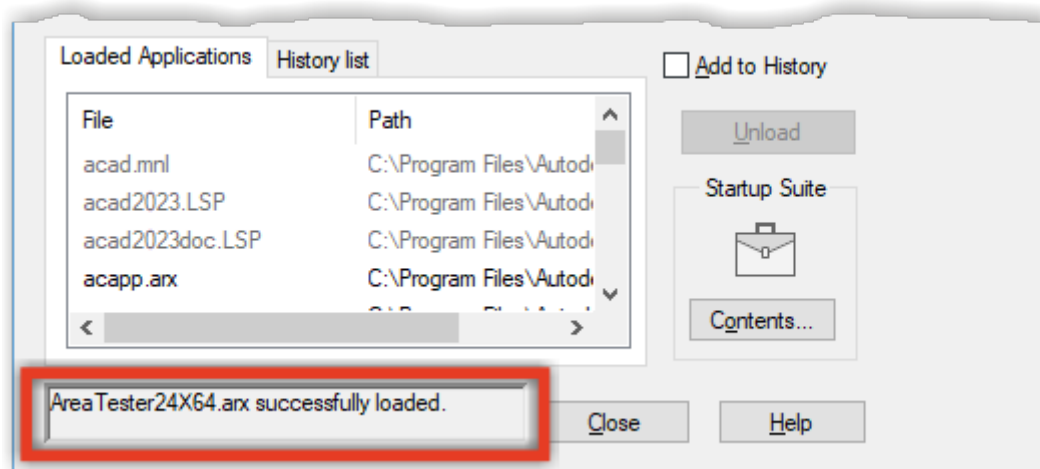
- Click **Load** button.



- After that, you may see a dialog box asking you to confirm your actions. In the specified window, click the **Always Load** button.



- If you specified the correct file to load the app, you will see a message that the application was successfully loaded.



- Close the application load dialog box.

4. Launching the app.

You can now launch the **AreaTester** application in **AutoCAD**. To do this, at the command line, enter the **_AREATESTER** command or the short **_ATST** command.